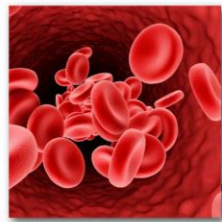


Select Health treats the source of the symptoms.

Damaged Spinal Disc



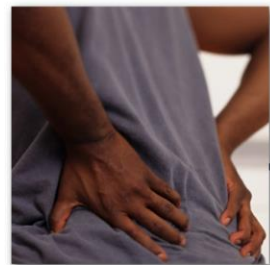
•The underlying problem causes the disc loses circulation, its source for staying healthy.



Circulation is Lost

Because the root cause is usually not addressed, the problem continues and causes the disc to die.

Disc Begins to Die



Symptoms, Conditions and Pain

•Most Doctors treat only the *symptoms*, NOT the root cause, this is why many patients continue to get worse. *We treat the root cause.*